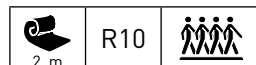


# TARASAFE ULTRA

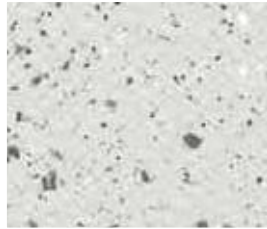
ULTRA



ULTRA COMFORT



**High performance vinyl safety flooring for contract applications**



**8701 Opal**  
LRV: 64.4 - WR: 0603



Brighter, cleaner surface that adds real sparkle



High resistance to heavy traffic



Matt finish for an improved design experience



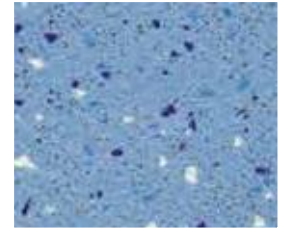
Easier to cut-up 5 times more blade life



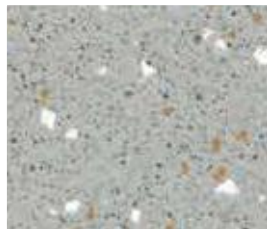
Easier to install, lighter & more flexible to handle



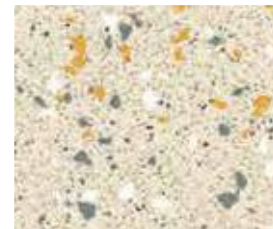
100% recyclable & contains recycled materials



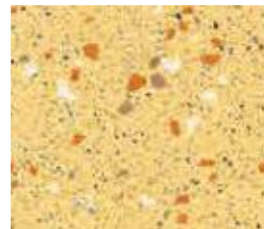
**7482 Halite**  
LRV: 31.2 - WR: 0500



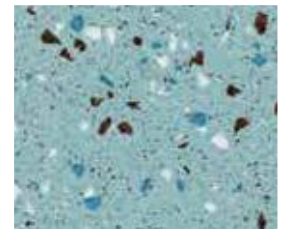
**8704 Pebble**  
LRV: 42.7 - WR: 0173



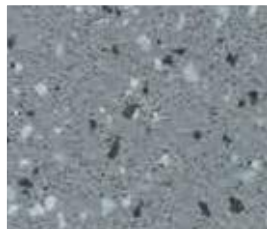
**7383 Diopside**  
LRV: 60.7 - WR: 2416



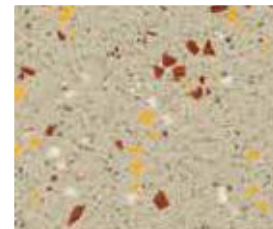
**4323 Sandstone**  
LRV: 50.7 - WR: 2350



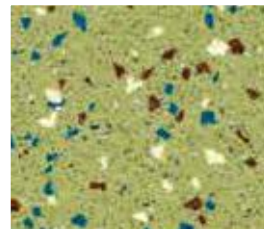
**4463 Aqua**  
LRV: 36.4 - WR: 2668



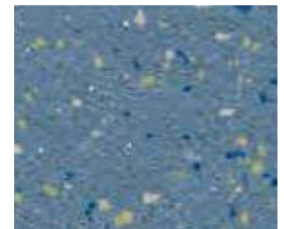
**8709 Granite**  
LRV: 23.1 - WR: 0033



**7384 Citrine**  
LRV: 41.2 - WR: 2174



**4505 Peridot**  
LRV: 36.0 - WR: 2499



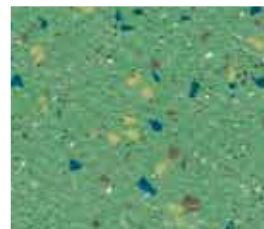
**4465 Cobalt**  
LRV: 22.9 - WR: 0190



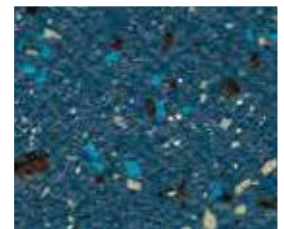
**8710 Basalt**  
LRV: 11.2 - WR: 2530



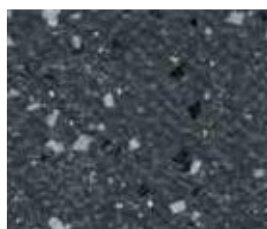
**8013 Jasper**  
LRV: 21.2 - WR: 2282



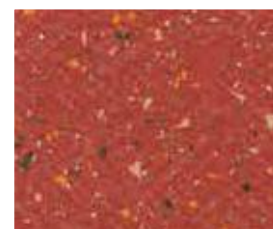
**4508 Jade**  
LRV: 27.7 - WR: 2418



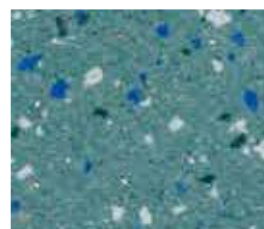
**4472 Moonstone**  
LRV: 11.2 - WR: 0905



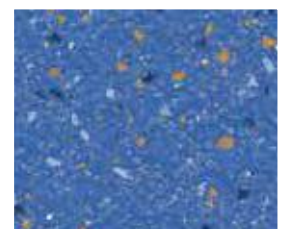
**8717 Obsidian**  
LRV: 9.2 - WR: 2238



**4128 Ruby**  
LRV: 13.4 - WR: 2947



**4460 Topaz**  
LRV: 21.8 - WR: 2434



**4470 Sapphire**  
LRV: 15.6 - WR: 2165

- Comfort sheet with foam backing
- Compact sheet without foam backing
- Colour reference available as TARASAFE ULTRA H20
- LRV: Light Reflectance Value
- WR: Welding Rod = 0585 + colour code number
- Suitable for heavy traffic applications
- \* For more details visit the [greenguide.org.uk](http://greenguide.org.uk)

**IN YOUR LOCAL  
DISTRIBUTOR NOW!**

**Gerflor**  
theflooringroup

# SAFETY FLOORING

gerflor.com

**TARASAFE ULTRA & ULTRA COMFORT** are slip resistant safety vinyl floorcoverings, with a PVC wear layer and deeply **inlaid mineral crystal particles** (patent pending) and coloured chips for a decorative design. They are reinforced with a glass fibre grid and are available in a sheet format. The ranges are ideal for **heavy traffic applications** where slip resistance, durability, hygiene and easy maintenance are required. Suitable for most contract & commercial areas, they are a popular choice in the education and healthcare environments, the matt finish surface is also perfectly suitable for dementia care units. They are eco-friendly, 100% recyclable, Floorscore® certified and do not contain any heavy metals or CMR 1&2. They are also 100% compliant with REACH. The product emission rate of volatile organic compounds is < 100 µg/m³ (TVOC after 28 days – ISO 16000 -6). **The SparClean®** surface treatment improves the product performance in terms of stain and dirt resistance and designs last longer for extended durability. **TARASAFE ULTRA COMFORT** has a VHD closed cell foam backing yielding a 16dB sound insulation.

			Tarasafe Ultra	Tarasafe Ultra Comfort
DESCRIPTION				
Total Thickness	EN ISO 24346 (EN 428)	mm	2.0	3.2
Thickness of wearlayer	EN ISO 24340 (EN 429)	mm	0.85	1.00
Weight	EN ISO 23997 (EN 430)	g/m²	2460	3080
Width/Length of Sheet	EN ISO 24341 (EN 426)	cm/lm	200/20	200/20
CLASSIFICATION				
Norm/Product Specification	-	-	EN ISO 10582 (EN 649)	EN 651
European classification	EN ISO 10874 (EN 685)	class	34-43	34-42
Fire Rating	EN 13501-1	class	Bfl-s1	Bfl-s1
Static electrical propensity	EN 1815	kV	< 2	< 2
Slip resistance: Pendulum Test (dry & wet)	BS 7976-2	PTV	> 36	> 36
Surface roughness Rz	-	µm	≥ 20	≥ 20
Slip resistance wet: ramp test with oil	DIN 51 130	class	R10	R11
Slip resistance wet: ramp test with water	DIN 51 097	class	B	-
Slip resistance – ramp test	EN 13845 (annex C)	class	ESf-ESb	ESf-ESb
PERFORMANCE				
Wear Resistance	EN 660.2	mm³	< 2	≤ 2
(EN 649) - (EN 651)	-	group	T	T
Type binder content	EN ISO 10582	type	I	-
Dimensional stability	EN ISO 23999 (EN 434)	%	≤ 0.40	≤ 0.40
Residual indentation	EN ISO 24343-1 (EN 433)	mm	≤ 0.03	≤ 0.20
Impact sound insulation	EN ISO 717-2	dB	-	16
Castor Chair test (type W)	ISO 4918 (EN 425)	-	OK	OK
Thermal Conductivity	EN ISO 10456 (EN 12524)	W/(m.K)	0.25	0.25
Colour Fastness	EN 20 105-B02	degree	≥ 6	≥ 6
Surface Treatment	-	-	SparClean®	SparClean®
Chemical Products Resistance	EN ISO 26987 (EN 423)	-	OK	Good
Anti-bacterial activity (MRSA) <sup>[1]</sup>	ISO 22196	-	> 99% Inhibits growth	> 99% Inhibits growth
ENVIRONMENT / INDOOR AIR QUALITY				
TVOC after 28 days	ISO 16000-6	µg/m³	< 100	
Certification	-	-	Floorscore®	
CE MARKING				
CE	EN 14 041	-		

\* For more details visit [gerflor.com](http://gerflor.com)  
(1) The implementation of an effective cleaning method is the best defence against infection.

GI SIB	(43)	TnB
--------	------	-----

UK reference



**ADHESIVES:** Please refer to Gerflor Installation guidelines on [gerflor.com](http://gerflor.com)

## INSTALLATION

Laying is the responsibility of the installer. Installation should be made in accordance with installation guidelines supplied and regularly updated by Gerflor's Technical Department. Installation should be carried out in accordance with local standards. Subfloor to be smooth, hard, clean and dry prior to laying. Where applicable the subfloor must incorporate an effective Damp Proof Membrane. The material must be allowed to acclimatise 24 hours prior to installation in a room temperature of between 18-24°C. All seams must be heat welded using Gerflor matching weld rod.

## MAINTENANCE

Maintenance should be carried out regularly to retain the appearance and durability of the floor. The floor covering should be maintained with regular sweeping and damp mopping using a neutral cleaner, or auto scrubber machine with an appropriate pad.

Rubber leaves indelible stains on vinyl floorings: do not use mats with rubber backing and replace tubular furniture feet with those made of PVC or polyamide. Place mats of sufficient length at entrances to reduce outside sources of dirt.

Further installation and maintenance instructions are available from Gerflor.

## COMPLEMENTS TARASAFE ULTRA H2O

Ideal solution for showers and changing rooms and any high level risk wet areas.

TARASAFE ULTRA								
	7383 Diopside	7384 Citrine	4505 Peridot	4465 Cobalt	7482 Halite	8701 Opal	8709 Granite	8717 Obsidian
TARASAFE ULTRA H2O								
	7325 Seashore	7314 Sand	7513 Seagrass	7418 Marine	7413 Ocean Blue	7720 Iceberg	7746 Stone	7732 Gravel

Ask for the Tarasafe Ultra H2O sample card!



Committed to sustainable development

**Gerflor®**  
theflooringgroup