

# TARALAY INITIAL

[gerflor.com](https://www.gerflor.com)



**Gerflor**<sup>®</sup>  
theflooringgroup





# TARALAY INITIAL



## High performance indentation / acoustic:

- Compact: 0,03mm / 6 dB
- Comfort: 0,10mm / 19 dB



## Easy maintenance:

Protecsol® Surface Treatment reduces cost and time of cleaning - no wax



**All references** are available in compact and comfort



## Comfort and Safety:

High Density foam backing for walking comfort and fall absorption

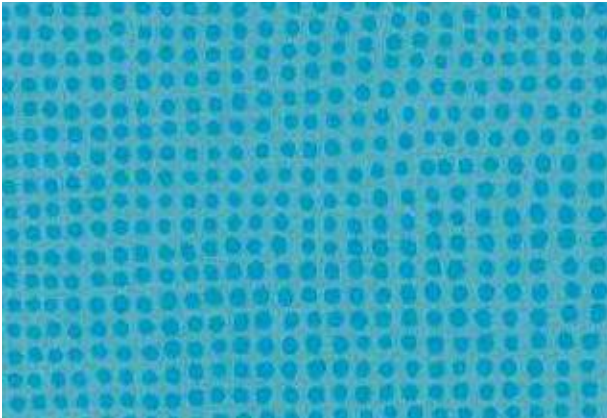




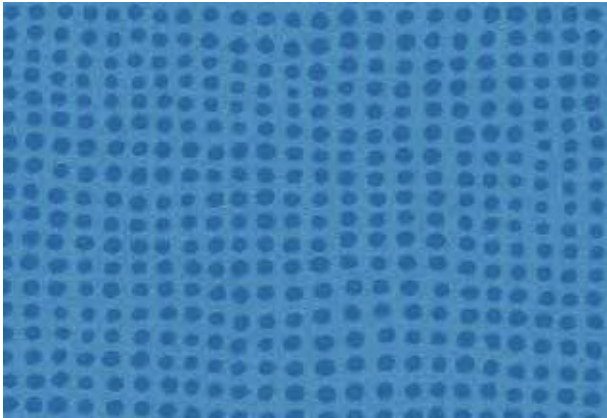




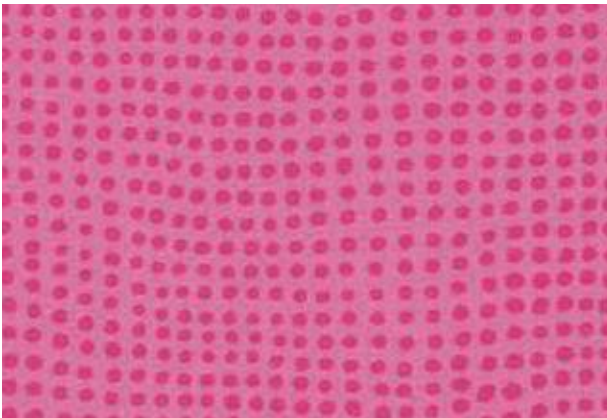
# TARALAY INITIAL



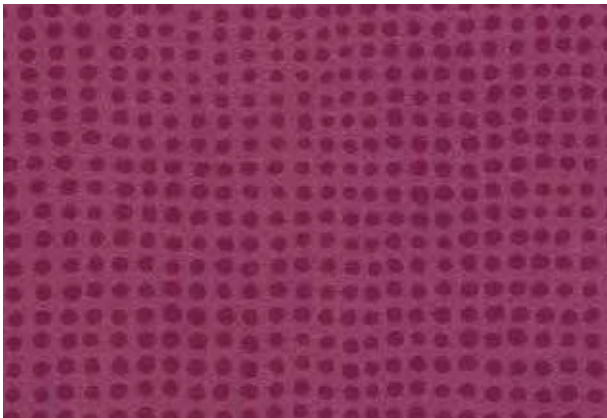
**0825 - Diversion Turquoise**  
NCS: 2050-B20G / LRV: 30.5



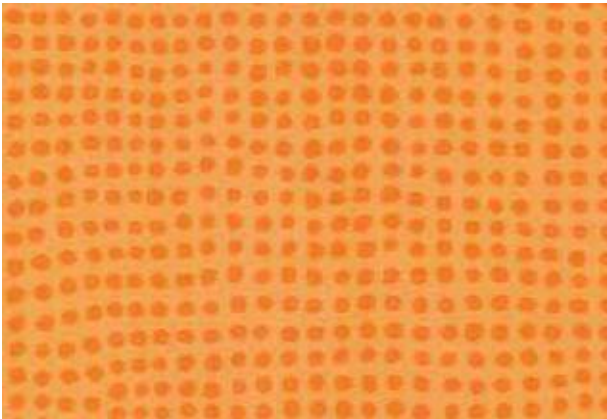
**0597 - Diversion Atlantique**  
NCS: 3050-R90B / LRV: 21.4



**0599 - Diversion Rose**  
NCS: 2050-R20B / LRV: 23.5



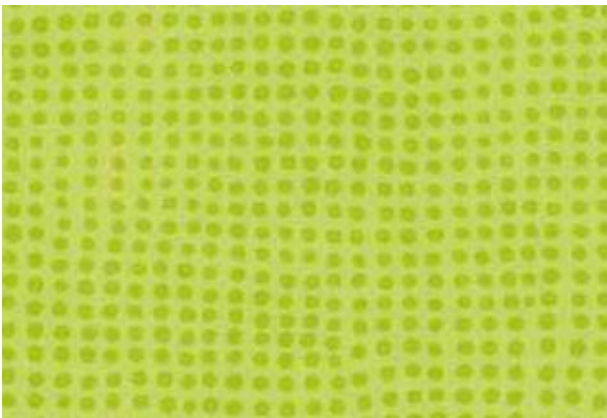
**0516 - Diversion Bordeaux**  
NCS: 4040-R20B / LRV: 10.8



**0600 - Diversion Clementine**  
NCS: 1080-Y40 / LRV: 36.3



**0595 - Diversion Grenade**  
NCS: 2070-Y90R / LRV: 17



**0515 - Diversion Kiwi**  
NCS: 2050-G70Y / LRV: 45



**0596 - Diversion Mimosa**  
NCS: 1060-Y20R / LRV: 56.2



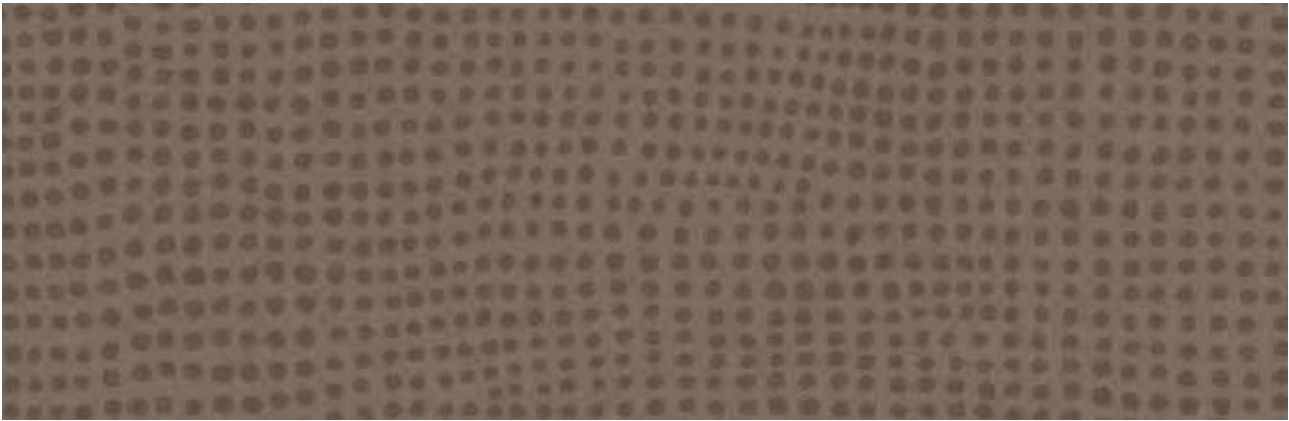
**0823 - Tweedy Beige**  
NCS: 3005-Y50R / LRV: 44.9



**0545 - Tweedy Natural**  
NCS: 2502-Y / LRV: 45.2



**0822 - Tweedy Taupe**  
NCS: 6005-Y20R / LRV: 17.5



**0049 - Diversion Carbone**  
NCS: 6005-Y50R / LRV: 13.7



**0824 - Diversion Souris**  
NCS: 3502-B / LRV: 36.7



**0047 - Diversion Ivoire**  
NCS: 1502-Y / LRV: 60.7



# TARALAY INITIAL



No strip  
Continuous  
design

**0829 - Filament** Cream  
NCS: 2005-Y20R / LRV: 50.3



16.6 cm

**0797 - Habana** Ivory  
NCS: 2005-Y50R / LRV: 52.7



16.6 cm

**0828 - Habana** Beige  
NCS: 4010-Y30R / LRV: 35.8




16.6 cm

**0588 - Noma** Clair  
NCS: 3005-Y50R / LRV: 36.5



Comfort version 



  
No strip  
Continuous  
design

**0024 - Renzo** Chamois  
NCS: 3020-Y30R / LRV: 35

Compact version 



  
6.2 cm

**0779 - Ottawa** Poplar  
NCS: 2030 - Y30R / LRV: 40



  
10 cm

**0636 - Esterel** Blond  
NCS: 5030-Y40R / LRV: 25.6



  
16.6 cm

**0589 - Noma** Marron  
NCS: 5010 - Y50R / LRV: 22.1

# TARALAY INITIAL



No strip  
Continuous  
design

**0590 - Renzo Steel**  
NCS: 6500 / LRV: 14.5



No strip  
Continuous  
design

**0826 - Filament Grey**  
NCS: 3500-N / LRV: 39.4



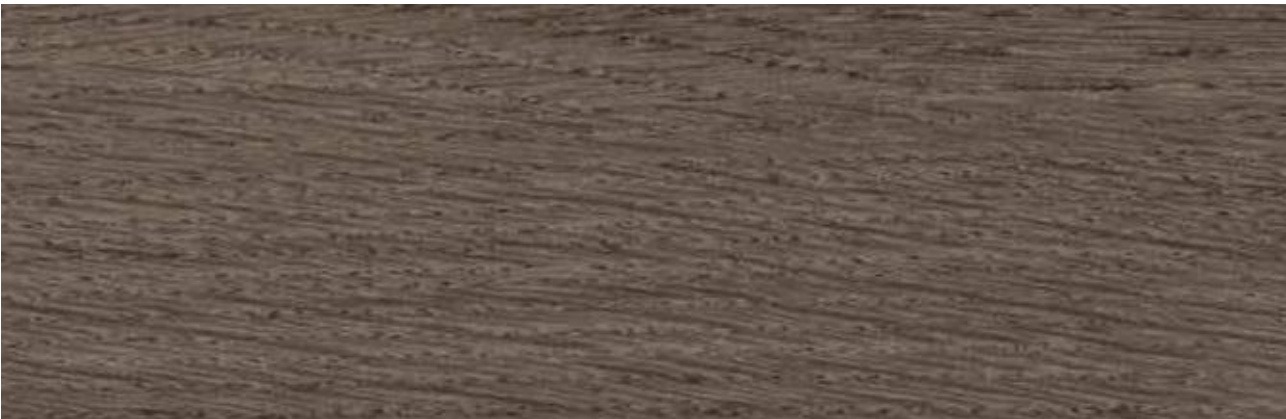
10 cm



No strip  
Continuous  
design

**0518 - Esterel Chocolate**  
NCS: 6005-Y50R / LRV: 16.3

**0799 - Filament Light**  
NCS: 4005-Y20R / LRV: 31.7



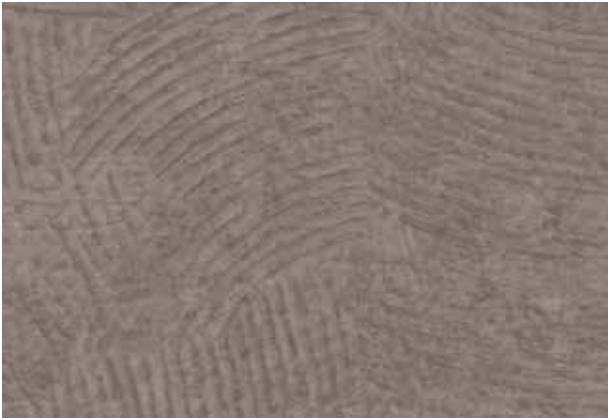
No strip  
Continuous  
design

**0069 - Renzo Noisette**  
NCS: 7010 - Y30R / LRV: 14.2





**0037 - Urban Souris**  
NCS: 3502-R / LRV: 34.8



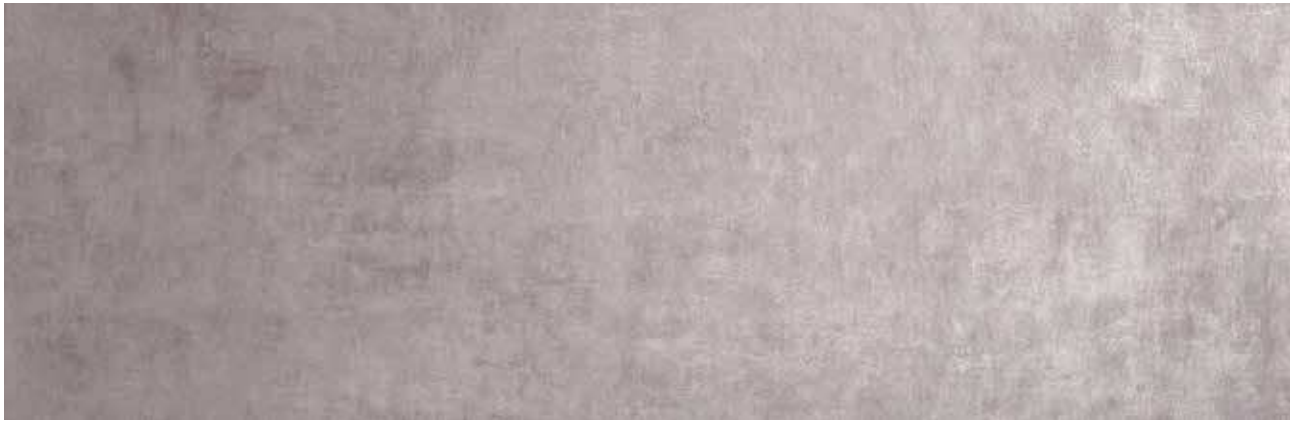
**0035 - Urban Gris**  
NCS: 5502-R / LRV: 24.1







**0465 - Strada Ciment**  
NCS: 4502-R / LRV: 25.7



**0791 - Strada Metallic**  
NCS: 5005-Y20R / LRV: 22.3




**0790 - Strada Chrome**  
NCS: 3500-N / LRV: 21.4

		TARALAY INITIAL COMPACT PRO		TARALAY INITIAL COMFORT PRO	
DESCRIPTION					
Total thickness	EN ISO 24346 [EN 428]	mm	2.00	3.35	
	ASTM F386-02	inch	0.08	0.13	
Wearlayer thickness	EN ISO 24340 [EN 429]	mm	0.70	0.65	
	ASTM F410-02	inch	0.028	0.026	
Weight	EN ISO 23997 [EN 430]	g/sq.m	2635	2825	
Width/length of sheet	EN ISO 24341 [EN 426]	cm / lm	200 / 25	200 / 25	
	-	feet - inch	6'6" / 82'	6'6" / 82'	
CLASSIFICATION					
Norm/product specification	-	-	EN ISO 10582 [EN 649]	EN 651	
European classification	EN ISO 10874 [EN 685]	class	34 - 43	34 - 42	
Fire rating	EN 13 501-1	class	Bfl-s1	Bfl-s1	
Static electrical propensity	EN 1815	kV	< 2	< 2	
Slip resistance wet: ramp test with oil <sup>[1]</sup>	DIN 51 130	class	R10	R10	
PERFORMANCES					
Wear resistance	EN 660.2	mm³	≤ 2.0	≤ 2.0	
Wear group	NF 189	group	T	T	
Type binder content	EN ISO 10582	Type	I	-	
Dimensional stability	EN ISO 23999 [EN 434]	%	≤ 0.40	≤ 0.40	
Residual indentation (requirement)	EN ISO 24343-1 [EN 433]	mm	≤ 0.10	≤ 0.20	
Residual indentation (average measured value)	-	mm	ca. 0.03	0.10	
Impact sound insulation	EN ISO 717-2	dB	6	19	
Castor chair test (type W)	ISO 4918 [EN 425]	-	OK	OK	
Thermal conductivity	EN ISO 10456 [EN 12524]	W/[m.K]	0.25	0.25	
Colour fastness	EN 20 105 - B02	degree	≥ 6	≥ 6	
Surface treatment	-	-	ProtecSol®	ProtecSol®	
Chemical products resistance	EN ISO 26987 [EN 423]	-	OK	OK	
Anti-bacterial activity [E. coli - S. aureus - MRSA] <sup>[2]</sup>	ISO 22196	-	> 99% inhibits growth	> 99% inhibits growth	
ENVIRONMENT / INDOOR QUALITY AIR					
TVOC after 28 days	ISO 16000-6	µg/m³	< 10	< 10	
Certification	-	-	Floorscore®	Floorscore®	
CE marking					
CE	EN 14041	-			
		-			

[1] For lifetime sustainable wet resistance, please refer to Tarasafe ranges  
[2] The implementation of an effective cleaning regime is the best defence against infection

**IMPORTANT:** The information contained in this document is valid from 01/09/2017 and is subject to change at any time without notice. In the context of constantly changing technology, our customers are responsible, prior to any use, for checking with us that this document is the version in force.

 Rubber leaves indelible stains on vinyl floorings: do not use mats with rubber backing and replace tubular furniture feet with those made of PVC or polyamide. Place mats of sufficient length at entrances to reduce outside sources of dirt.

TARALAY INITIAL, LESS SPEAKING FOR MORE ACTIONS



**COMPOSITION**  
100% REACH



**INDOOR AIR QUALITY**  
100 times lower than norms requirements  
(TVOC < 10 ug/m³ after 28 days)



**RECYCLABILITY**  
100%



**LCA**  
Eco-designed according to a product specific life cycle analysis



**WELLNESS**  
Anti slip R10  
Comfort version : Walking comfort < 65 dB (best certification) and impact sound insulation - 19dB



Be connected!



#Gerflor



www.gerflor.com